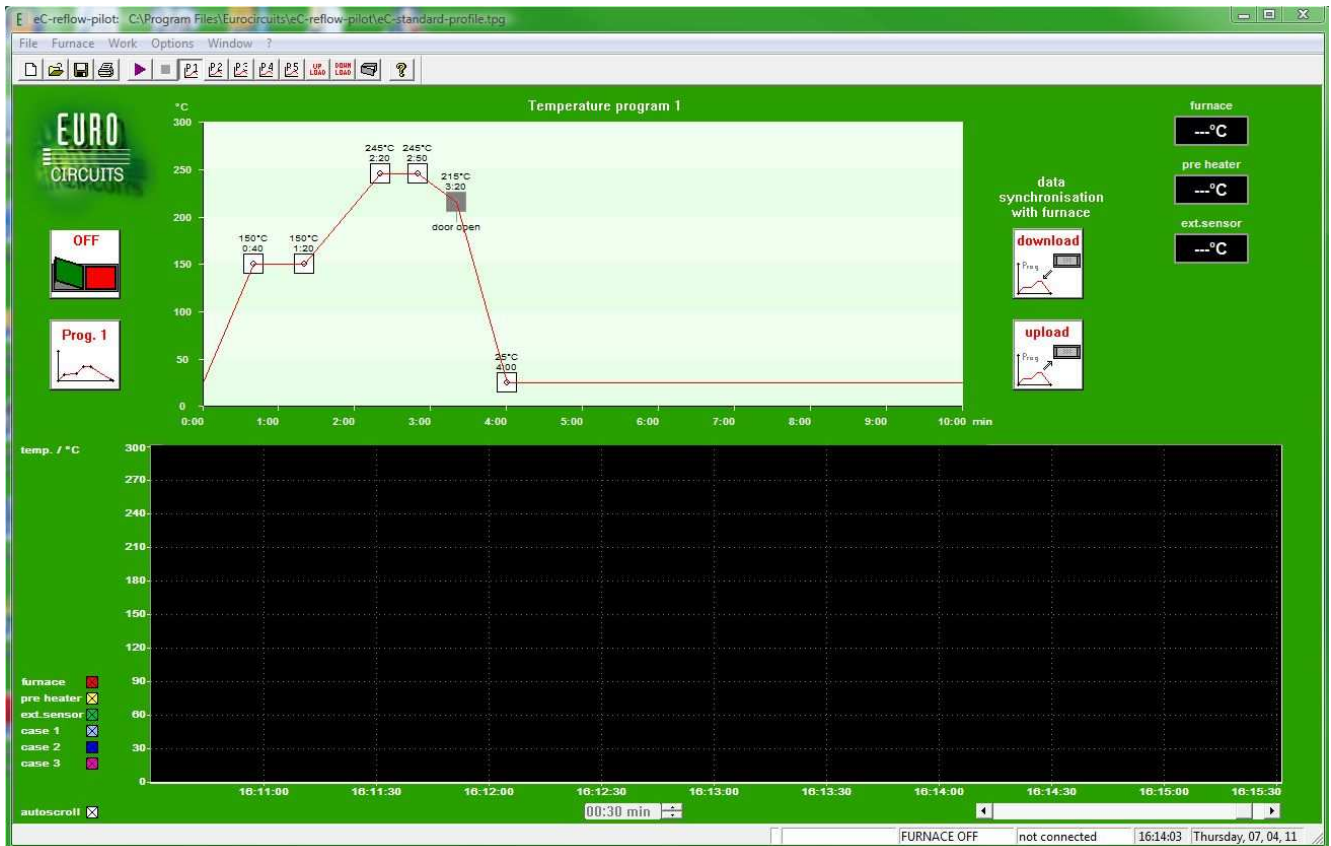


eC-reflow-pilot – operator manual



preheater:

- **set temperature:** sets the temperature of the pre-heater.
- **follow act. temp. program:** the pre-heater follows the temperature of the main temperature profile with the defined offset.

global parameters:

- **temperature correction:** sets the offset between main and external sensor. This offset is also displayed.
- **max. diff. temperature:** the value defines the maximum allowed temperature difference between main and external sensors. Exceeding this difference will trigger an alarm.
- **max. case temp:** sets the maximum permitted case temperature. If this is exceeded an alarm is triggered.
- **reflow hold time:** sets the duration of the maximum temperature as defined in the profile. After this temperature is reached it will be held for the specified time.
- **fan speed:** sets the fan speed as a percentage of the maximum.
- **fan run time:** sets the cooling time of the fan after the program has ended. Fan speed is always maximum (100%).

Download – File transfer from the eC-reflow-mate to the eC-reflow-pilot.

Upload – File transfer from the eC-reflow-pilot to eC-reflow-mate.

COM-Port setup. On first operation, the valid COM port will be shown. If this is not the case, check the control panel / Hardware and Sound / device manager / Universal Serial Bus controllers, for the suggested COM Port and input the port number in the eC-reflow-pilot options – select serial port in drop-down menu.

Temperature points in the profile can be hidden by dragging them to the beginning of the timeline.

PID controller parameter should only be changed by the manufacturer or after consultation.